



CG Christmas Dance

Saturday, December 9,
2017

Boys:

- Shirt with collar and tie mandatory
- Dress pants
- Dress shoes (no gym shoes)



Girls :

- Knee length dress or dress-pants with fancy blouse required.
- Dress shoes
- No hats allowed
- No bare midriffs





DRESSES MUST BE
KNEE LENGTH

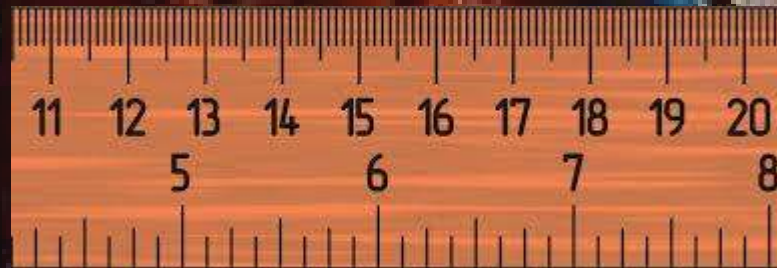
what TO wear...



WHAT NOT TO WEAR!!



Not sure about your dress?
If you want your dress
measured, go to room 100



Other Dress Dance Rules that MUST be followed!

Dresses may not be cut below the bust line. The bust continues around your sides directly under the armpit. •

This dress meets
the dress code!

Bust line



Bust line
(on the side)

Christmas Dance Dress Clarifications!

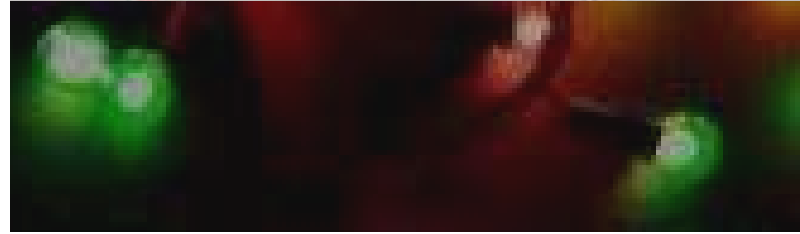
In previous years, the handbook has said dresses could not be “too low cut in the front.” This year, we made the language more specific to say that dresses could not be cut below the bust line and that no plunging necklines would be allowed. Included in this slideshow are dresses that ARE allowed.

Another clarification: The handbook has ALWAYS said bare midriffs are NOT allowed. The language is the same this year in the handbook.

You ARE allowed to sew inserts into your dresses with sheer fabric to cover any exposed bare midriffs or to fix any plunging necklines. Those inserts MUST be in the dress for the whole dance and cannot be taken out.

Next Friday in homeroom, we will answer any other questions or give any other clarifications that might be needed. Hope this helps!!







Dress
www.idressid.com



MACloth.com





SofieHouse.com



1st-Dress.com

Copyright © 1st-Dress

The Bust lines on these dresses are NOT allowed!



Dress Dance Rules...continued...

Dresses may be backless as long as they are not cut below the navel.



Dress Dance Rules...continued...

Midriffs will not be exposed • Cut-outs exposing midriffs are not acceptable. • This includes both front and side. • Two piece dresses with crop-tops are not appropriate. If you are wearing separates, you must be able to raise your hands above your head with no midriff showing.

This dress IS appropriate!



These Dress MIDRIFFS are NOT Allowed!!



New Dance Expectation: **Breathalyzer**

Just a reminder of CJ's new dance policy - **EVERYONE** attending a CJ Dance (students & guests) may be administered a breathalyzer test prior to entrance.

This will be taking place as you get checked in at the dance.

Tickets and Forms

Tickets sold before school (7:40-8:00am) and after school (3:00-3:20pm) in ROOM 100 on **Friday, December 1st, Monday, December 4th, & Tuesday, December 5th..**

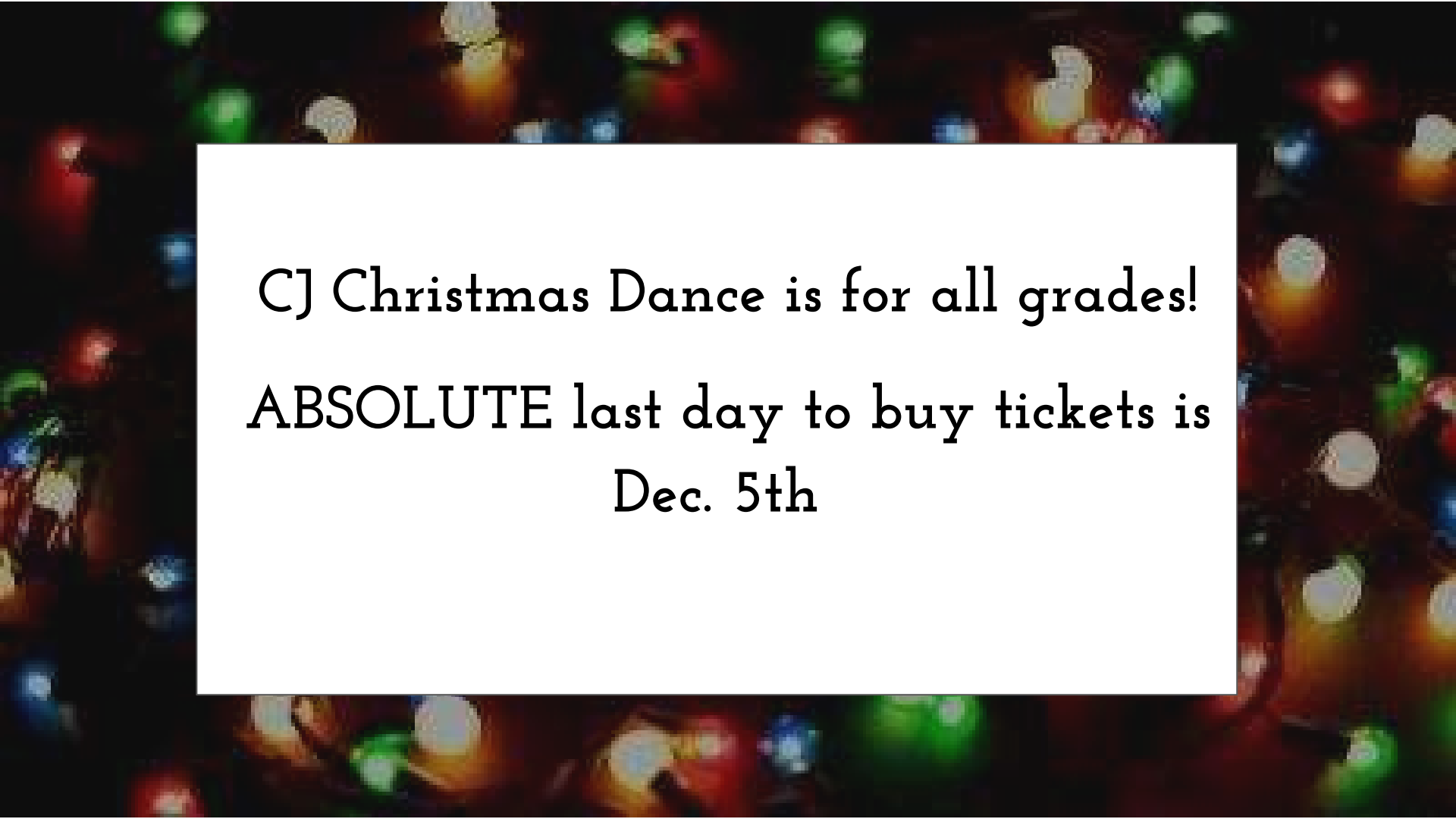
We also will sell during lunch for Freshman, Sophomores, Juniors, & Seniors on December 5th:

-\$11.00 Single Ticket

-\$22.00 Couples ticket



If you're bringing a guest from another school, you must fill out a GUEST form from OSS **BEFORE YOU BUY YOUR TICKET**



CJ Christmas Dance is for all grades!
ABSOLUTE last day to buy tickets is
Dec. 5th

Where and What Time?



Greek Orthodox Church

8 PM -11 PM

No entry after 9 pm